

Cobweb Skipper

Cobweb Skippers are rare in Alabama and have been documented only from the Mountains/Piedmont region of the state. There is a single brood each year, and that occurs in early spring. These skippers are found in dry, grassy, open areas (often hillsides) that include bluestem grasses. Frequently these are fire-impacted habitats. Cobwebs Skippers are highly colonial. Flight is close to the ground. Males perch on or near the ground to wait for females. Both sexes nectar from early spring wildflowers.



- Small with short, compact wings.
- Often highly camouflaged with mats of dead grasses.
- Time of year is important. Cobweb Skippers fly earlier than most butterflies and are only encountered in the spring.
- Habitat is important. Cobweb Skippers are typically found near stands of bluestem grasses.
- Females are slightly larger than males and are less conspicuously marked overall. Dorsally, they are marked similarly to males, but often lack orange.
- May be confused with female Sachems and Lace-winged Roadside Skippers.





Cobweb Skipper

Dorsal Male

Whitish costal margin*

Dull brown base color

Wrist “bracelet”

Two pale spots

Dark stigma surrounded by orange

Cobweb Skipper *Hesperia metea*

© Vitaly Charny

** Reliable diagnostic markers*

Wingspan: 1 – 1½ inches (2.5 – 3.5 cm)



Cobweb Skipper

Dorsal Female

Whitish costal margin*

Dull dark brown base color

Wrist “bracelet”

Pale, jagged spots

Cobweb Skipper *Hesperia metea*

© Jeff Pavlik

* *Reliable diagnostic markers*

Wingspan: 1 – 1½ inches (2.5 – 3.5 cm)

Alabama Butterfly Atlas | alabama.butterflyatlas.org



Cobweb Skipper

Ventral View

- Whitish forewing margin*
- Forewing markings mirror dorsal side
- Conspicuous white V-shaped band that may bleed into veins creating a cobweb appearance.*
- Small white patch
- Eye line and palps are whitish

Cobweb Skipper *Hesperia metea*

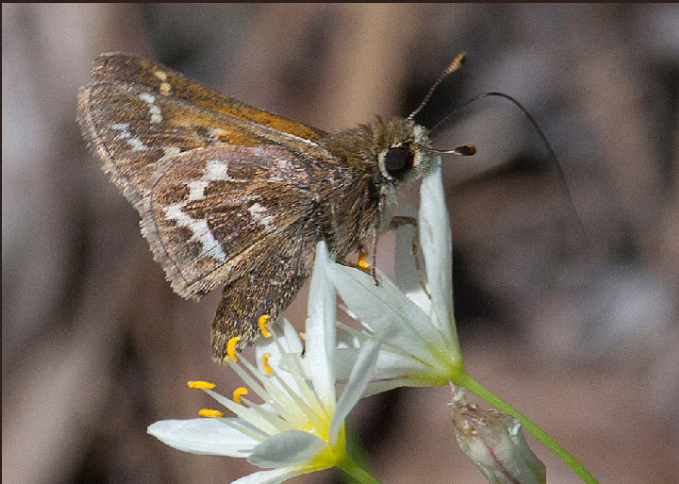
© Sara Bright

** Reliable diagnostic markers*

Wingspan: 1 – 1½ inches (2.5 – 3.5 cm)

Similar Species

Cobweb Skipper



© Sara Bright

Lace-winged Roadside Skipper



© Sara Bright

Female Sachem



© Vitaly Charny