

# Phaon Crescent

Phaon Crescents typically occur sporadically in Alabama's Coastal Plain, although as summer progresses, they may extend further north. In southern counties, they are encountered in late spring through fall. It is usually late summer or fall before they are found further north. They prefer moist, low-lying areas that support their host plants, various frog fruit species. Flight is very low, but may be rapid. These crescents puddle on moist earth and nectar from low growing flowers.



© Vitaly Charny

- Sexes are similar, although females are often slightly larger.
- Seasonally dimorphic. Winter form has dark brown mottling on ventral hindwing; summer form has a creamy-colored hindwing with some dark reticulations.
- Smallest crescent species
- The diagnostic pale median forewing band may be white, pale yellow, or creamy.
- May be confused with Pearl Crescents, Gorgone Checkerspots, and Silvery Checkerspots. Only Phaon Crescents display a distinct pale median band on the dorsal forewing. Female Pearl Crescents sometimes have a median forewing band that is somewhat paler than the rest of the ground color, but it is not as distinct as Phaon's.



# Phaon Crescent

Dorsal View



Forewing pale creamy band\*

Pale spot center margin

Dark orange wings

Black margins and markings

Strongly checkered fringe

Phaon Crescent (*Phyciodes phaon*)

© Vitaly Charny

\* *Reliable diagnostic marker*

Wingspan: 1 - 1½ inches (2.5 - 3.8 cm)

Alabama Butterfly Atlas | [alabama.butterflyatlas.org](http://alabama.butterflyatlas.org)





## Phaon Crescent

Ventral Summer Form

Forewing pale cream band\*

Two orange-red patches

Dark marginal patch with pale crescent

Pale cream with light brown reticulations

Checkered fringe

Phaon Crescent (*Phyciodes phaon*)

© Sara Bright

\* *Reliable diagnostic marker*

Wingspan: 1 - 1½ inches (2.5 - 3.8 cm)

# Phaon Crescent

Ventral Winter Form

Forewing pale cream band\*

Two orange-red patches

Hindwing mottled dark brown

Dark marginal patch with pale crescent



Phaon Crescent (*Phyciodes phaon*)

© Sara Bright

\* *Reliable diagnostic marker*

Wingspan: 1 - 1½ inches (2.5 - 3.8 cm)





# Phaon Crescent

Dorsal Male/Female Pair

FEMALE: Abdomen has ovipositor

Slightly larger

MALE: Slightly smaller

Abdomen has claspers

Phaon Crescent (*Phyciodes phaon*)

© Sara Bright

\* *Reliable diagnostic marker*

1 - 1½ inches (2.5 - 3.8 cm)



# Similar Species

Phaon Crescent



© Mike Howell

Pearl Crescent



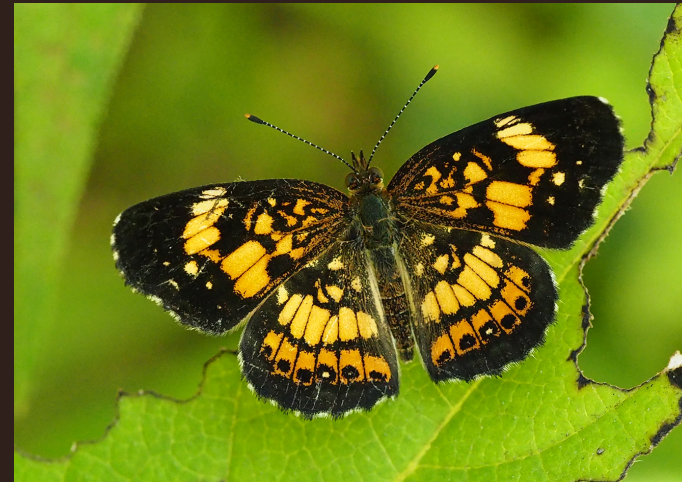
© Jerry Green

Gorgone Checkerspot



© Sara Bright

Silvery Checkerspot



© Vitaly Charny