

Southern Cloudywing

Southern Cloudywings occur throughout Alabama, although there have been significantly more sightings in the upper two-thirds of the state. They are multi-brooded, flying spring through early fall. They favor open, sunny habitats, but are not usually in developed areas. Flight is fast and erratic. Males visit puddles. They are extremely territorial, often returning to the same perch. Southern Cloudywings nectar from a variety of flowers.



© Sara Bright

- Sexes are similar. Females are slightly larger. Wings are more rounded.
- Markings are variable. Spring/first brood individuals are more lightly marked. The prominent forewing mark is less hour-glass shaped in spring individuals.
- Hindwing fringe is snowy white but less so in spring individuals.
- The white patch at the bend of the antennal club may be difficult to discern in the field and in photographs where reflections and lighting must be considered.
- Males have no costal fold in forewing.
- May be confused with Northern Cloudywings and Confused Cloudywings. Southern Cloudywings tend to be more prominently marked. They have white palps/face, not brown (Northern Cloudywing). Hindwing fringes are white, especially in the summer brood; Northern and Confused Cloudywings have darker, checkered fringes. Antennal clubs have a white patch that the other cloudywings lack. Southern Cloudywings have a prominent white eye ring that Northern Cloudywings lack. Males lack a forewing costal fold (Northern Cloudywing).





Southern Cloudywing

Dorsal View

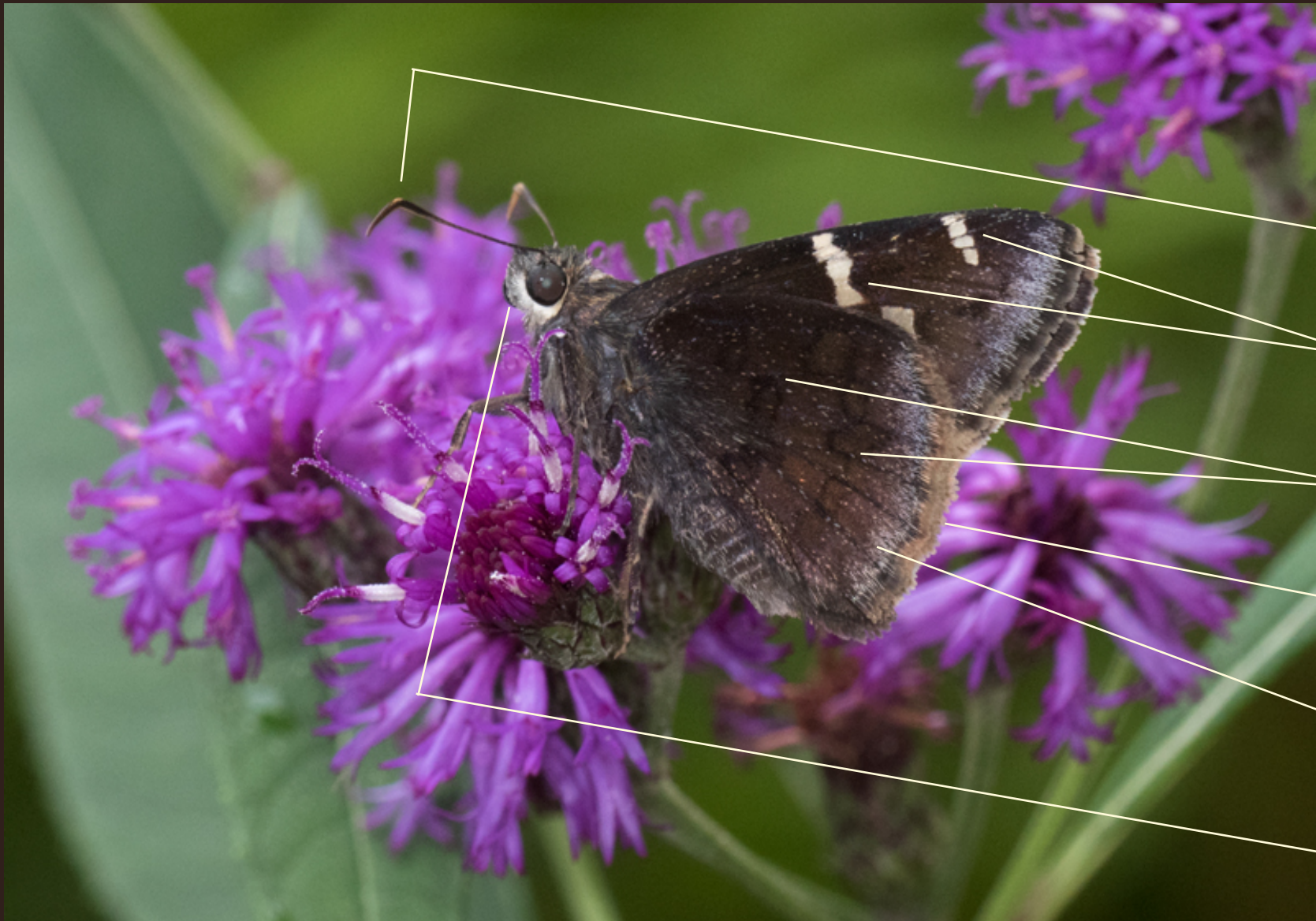
- Extensive white eye line
- Upper spot as large or larger than next spot
- Lower spot covered or almost covered by the spot above; not offset
- Spots close together; middle spot often hour-glass shaped
- Checkered forewing fringe
- Primarily white hindwing fringe

Southern Cloudywing *Thorybes bathylus*

© Sara Bright

* *Reliable diagnostic markers*

Wingspan: 1¼ - 1¾ inches (3.3 – 5.0 cm)



Southern Cloudywing

Ventral View

White at bend of antennae

Heavy white spots

Dark brown cross bands

Fringes light tan

Slight frosting

White face

Southern Cloudywing *Thorybes bathylus*

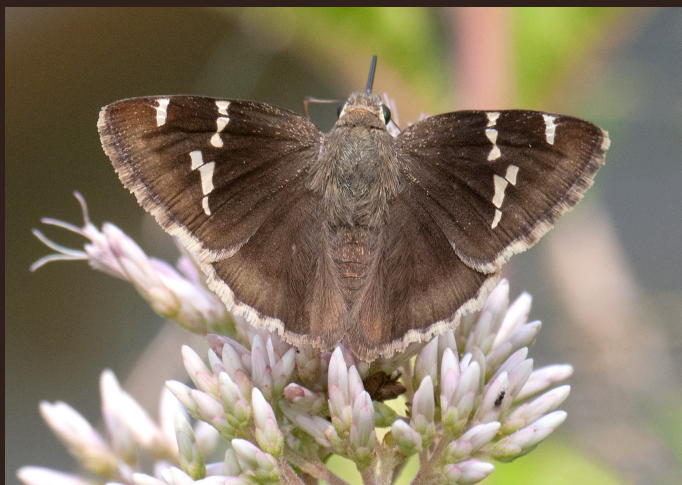
© Sara Bright

** Reliable diagnostic markers*

Wingspan: 1¼ - 1¾ inches (3.3 – 5.0 cm)

Dorsal Similar Species

Southern Cloudywing



© Sara Bright

Northern Cloudywing



© Sara Bright

Confused Cloudywing



© Vitaly Charny

Ventral Similar Species

Southern Cloudywing



© Sara Bright

Northern Cloudywing



© Sara Bright

Confused Cloudywing



© Vitaly Charny