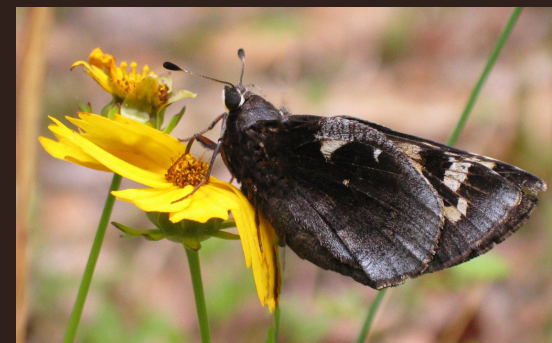


Yucca Giant-Skipper

Yucca Giant-Skippers are uncommon but widespread in Alabama. They have only one flight, which occurs in late spring. Habitat is open woodlands that contains yucca species. Upon emergence, both sexes may be seen clinging to the larval chimneys that are formed at the top or side of the host plant. Otherwise, males are seen while perching nearby or flying to search for females. Females are rarely seen unless ovipositing. Yucca Giant-Skippers do not nectar.



© Vitaly Charny

- A very large, heavy-bodied skipper.
- Sexually dimorphic. Females have a row of yellow spots at the bottom of the dorsal hindwing that males lack. They are heavier bodies than males. Male/female ventral surfaces are similar.
- May sometimes be heard before seen—the large wings make an audible whirring noise.
- May be confused with Cofaqui Giant-Skipper. Yuccas are much more common and widespread. They only have one flight; Cofaquis have two. Yuccas are somewhat larger and have more elongated wings. Dorsally, Yucca Giants have a yellow forewing band that does not touch that forewing spots; in Cofaquis, this band widens into a patch and touches the cell-end dots. Yuccas lack ventral hindwing spots that are present on Cofaquis.





Yucca Giant Skipper

Dorsal Male

- Band of small white spots near apex
- Submarginal yellow band
- Wings brown/black
- Yellow hindwing border
- Plain, unmarked hindwing

Yucca Giant-Skipper *Megathymus yuccae*

© Vitaly Charny

* *Highly reliable markers (when applicable)*

Wingspan: 2 - 3 inches (5.1 - 7.9 cm)



Yucca Giant Skipper

Dorsal Female

Wings brown/black

Band of white spots near apex

Submarginal yellow band

Row of spots on lower hindwing

Yellow hindwing border

Yucca Giant-Skipper *Megathymus yuccae*

© Julie Luetzelschwab

* Highly reliable markers (when applicable)

Wingspan: 2 - 3 inches (5.1 - 7.9 cm)



Yucca Giant Skipper

Ventral Male

*Large white mark and white patch
along hindwing edge

Very dark ground color

Extensive purplish-white frosting

Yucca Giant-Skipper (*Megathymus yuccae*)

© Jeff Pippen

* Highly reliable markers (when applicable)

Wingspan: 2 - 3 inches (5.1 - 7.9 cm)



Yucca Giant Skipper

Ventral Female

*Large white mark and white patch
along hindwing edge

Very dark ground color

Extensive purplish-white frosting

Very heavy body

Yucca Giant-Skipper (*Megathymus yuccae*)

© Vitaly Charny

* Highly reliable markers (when applicable)

Wingspan: 2 - 3 inches (5.1 - 7.9 cm)



Yucca Giant Skipper

Male/Female Ventral Comparison

MALE: Smaller
Slimmer body

FEMALE: Larger
Much heavier body

Yucca Giant-Skipper (*Megathymus yuccae*)

© Vitaly Charny

* *Highly reliable markers (when applicable)*

Wingspan: 2 - 3 inches (5.1 - 7.9 cm)

Dorsal Similar Species

Cofaqui Giant-Skipper



© MaryAnn Friedman

Yucca Giant-Skipper



© Paulette Haywood Ogard

Ventral Similar Species

Yucca Giant-Skipper



© Vitaly Charny

Cofaqui Giant-Skipper



© MaryAnn Friedman